

**FOR SALE**



A division of MGX Equipment Services, LLC



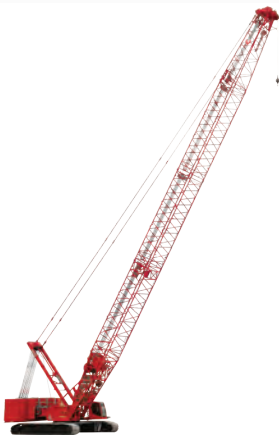
## 2016 MANITOWOC MLC300 SERIAL# 605836

### Cab

- Lattice-boom crawler crane
- 450 HP Cummins QSG-12 diesel engine
- Deluxe crane cab with AC, heat and radio
- Crane Control System with two graphic displays
- Cab tilt
- LMI warning light

### Crane

- 225.9' main boom
- 98.5' No. 500 basic boom consisting of 26.2' butt, 39.4' insert with luffing hoist cheaves and 32.8' top with eight 30" diameter tapered roller bearing sheaves
- Includes rope guides, boom hoist wire rope, boom angle indicator and 24.5 ton capacity
- Detachable upper boom point
- Series 3 counterweight - twenty 22,050 lbs counterweight boxes
- 2,414 lb hook and cylindrical weight ball



**CONTACT US**

ASPENEQUIPMENT.COM

952-888-2525